

The Gifted Education Class & IEP Process

Kristin Asquith
Gifted Education Administrator

Education *Beyond* Expectations



Gifted Education Curriculum



Education *Beyond* Expectations



K-12 Gifted Education Curriculum

- Overarching Skill Strands
 - Critical & Creative Thinking Skills
 - Problem Solving Skills
 - Research Skills
 - Technology Skills
 - Leadership Skills
 - Social & Emotional Coping Skills
- Part of students' time spent on curriculum content
- Skill strands consistent across schools; activities may differ among schools

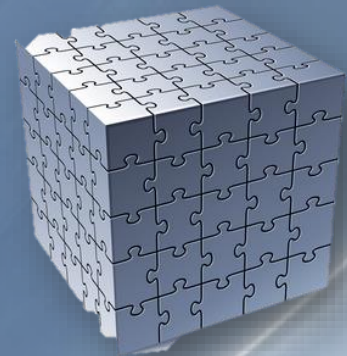


Education *Beyond* Expectations



K-12 Gifted Education Curriculum

- Collaboratively developed strands, units, activities
- Individually developed strands, units, activities
- Capitalize on the interests and passions of the students each year
- Small group and individualized experiences



Education *Beyond* Expectations



Elementary School



Education *Beyond* Expectations



Gifted Education Class

- Grade level time with gifted education teacher and other students identified as gifted
- Other needs met individually
- Half of the time on IEP goals; half of the time on curriculum elements



Elementary School Sample Activity



What is this artifact?
What was it used for?
Who would have used it?

Ethiopian Healing Sticks

Education *Beyond* Expectations

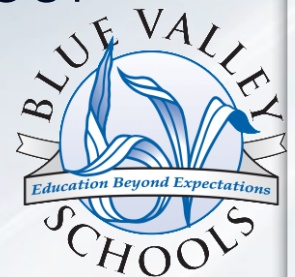


Embedded Into the Curriculum

- Introduces a unit on cultures
- Students create an original culture with artifacts, customs, and many details
- Students share their culture with another school
- Work like archeologists to discover details about the people behind the cultural information

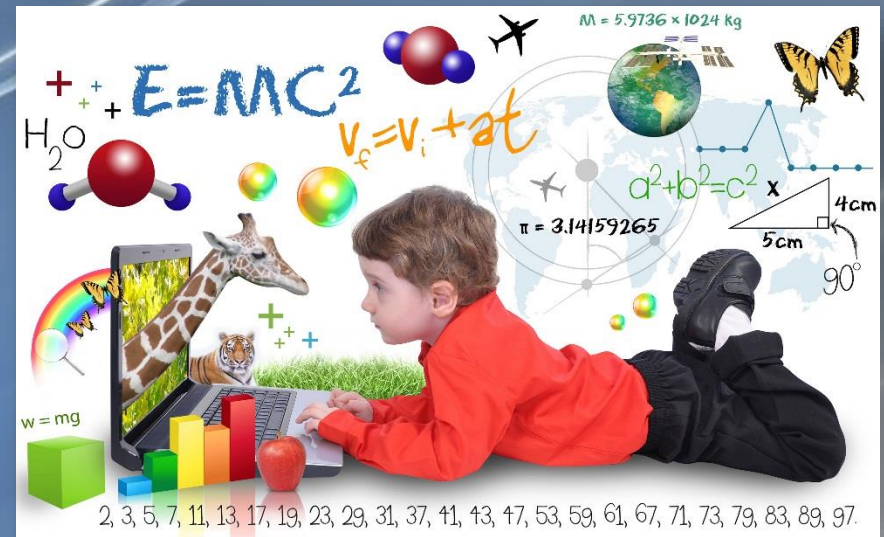


Education *Beyond* Expectations



Potential Topics

- Wide range of potential topics
 - Philosophy
 - Roller Coaster Physics
 - Stock Market
 - Mystery Disease
 - Archeology
 - World War I
 - National Treasure
 - Amazing Race
 - Robotics
 - Many Others
- Dependent on students' grade levels and interests



Education *Beyond* Expectations



Middle School



Education *Beyond* Expectations



Guided Discovery Class

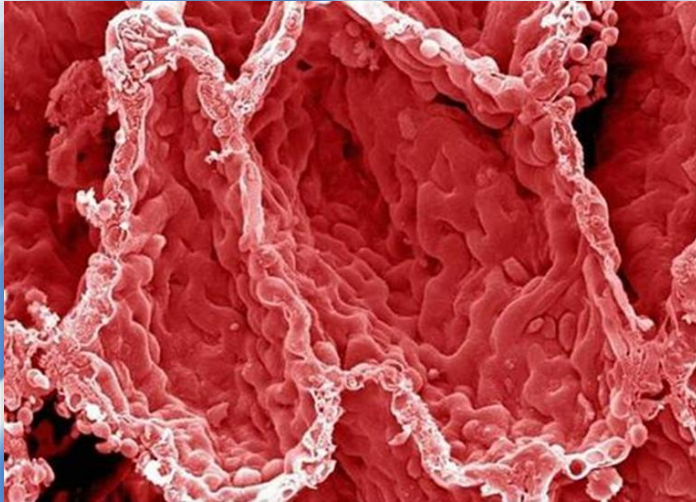
- Time with gifted education teacher at least 45 minutes every other day
- Other needs met individually
- Half of the time on IEP goals; half of the time on curriculum elements



Education *Beyond* Expectations



Middle School Sample Activity



Human Lung Alveoli – Less than a nanometer

How big is this?
Where would it be found?
What is this?



Plaque on a tooth – Less than a nanometer

Education *Beyond* Expectations



Potential Topics

- Wide range of potential topics
 - Toy Box Leadership
 - Debate
 - Six Word Stories
 - Service Learning
 - How Big is Big
 - Inventions
 - Seven Habits of Highly Effective Teens
 - Future City
 - Robotics
 - Many Others
- Dependent on students' grade levels and interests



Education *Beyond* Expectations



High School



Education *Beyond* Expectations



Gifted Education Class

- Semester class meets at the same frequency as general education classes
- Other needs met individually
- Students tend to be future focused
- Individualized options and experiences; group curriculum elements



Education *Beyond* Expectations



Embedded Into Curriculum

- Spontaneous critical thinking and problem solving
- College readiness
- Interview preparation
- Questions are college application essay prompts or interview questions



Education *Beyond* Expectations



Potential Topics

- Wide range of potential topics
 - Leadership development
 - Service Learning
 - Developing Creative Thinking
 - Research Skill Development
 - Developing Test Prep Skills
 - Investigating Specific Careers in Depth
 - Exploring Selective Colleges
 - Individualized Studies
 - Specific Social & Emotional Topics
 - Many Others
- Dependent on students' grade levels and interests



Education *Beyond* Expectations



Gifted Education IEPs and Special Education Elements

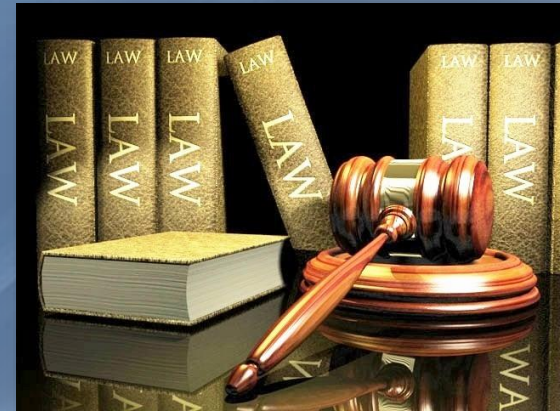


Education *Beyond* Expectations

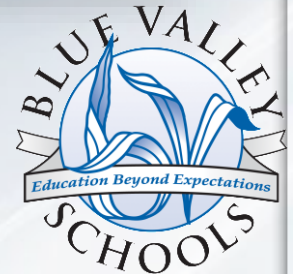


Special Education for Gifted Education

- Gifted Education is a provision of special education in Kansas
- School districts decide how to find and serve students (state does not define)
- Special education law (usually) applies to gifted education
- Students identified as gifted have an IEP



Education *Beyond* Expectations



The Gifted Education IEP

- Annually reviewed document
- Details several aspects of student's special education experiences
- Team decisions about content
- Document at meeting is a draft
- Parents can request a meeting anytime
 - Some meetings are not IEP meetings



Education *Beyond* Expectations



Required Elements

- Statement of Present Level of Academic Achievement and Functional Performance
- Need-based Goals
- Gifted Education Services
- Parent concerns
- Placement Conversation



Education *Beyond* Expectations



Additional Requirements

- Notice of Meeting (10 days)
- Offering *Parent Rights in Special Education in Kansas* document every year
- Triennial conversation about whether a reevaluation is needed
 - Gathering new data is less common



Education *Beyond* Expectations



The IEP Team

- Makes decisions about the IEP
- Parents are part of the team
- Team members include
 - Student (when old enough to participate)
 - Parents/guardians/appointed adult
 - General education teacher(s)
 - Special education teacher
 - Administrator (or designee)
 - School psychologist (sometimes)



Education *Beyond* Expectations



The IEP Meeting

- Scheduled with you by teacher, para
- Paperwork emailed to you
- Parent Rights in Special Education doc emailed to you
- Draft of IEP provided prior to meeting



Education *Beyond* Expectations



The IEP Meeting

- Recommend teachers use an agenda
- Meeting includes required attendees
- Attendees may be excused—exception to the norm
- Major areas of the IEP reviewed (not typically read verbatim)
- Parent concerns discussed



The IEP Meeting

- All team members should participate actively
- Signing the IEP shows attendance
- Any consent items are included on a separate form (PWN)



Education *Beyond* Expectations



Consent Items

- Initial evaluation
- Placement in gifted education (initial meeting)
- Changes in services (change of 25% or more)
- Changes in placement (not location)
- Reevaluation
- Ending services



Education *Beyond* Expectations



Consent Not Needed

- Student goals
- Programs/curriculum used to act upon goals
- People providing services
- People attending meetings (required roles must be present)



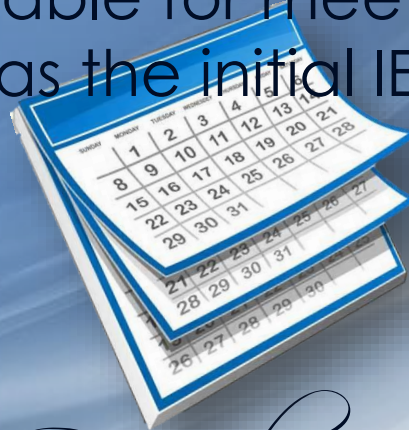
Education *Beyond* Expectations



Frequently Asked Questions

- Can my child's IEP be at the beginning of the year?

IEP meeting dates correspond to the date of the previous year's IEP meeting. It wouldn't be possible for middle school or high school teachers to hold IEP meetings for all students at the beginning of the year, so it is preferable for meetings to remain in the same time frame as the initial IEP meeting.



Education *Beyond* Expectations



Frequently Asked Questions

- How many general education teachers have to attend my child's IEP meeting?

At least one general education teacher must attend.



- Can I request the teacher I want to have attend my child's meeting?

You can request a teacher to attend, but it may not be possible for that person to attend.

Frequently Asked Questions

- How do I access my child's IEP progress reports?

In ParentVue of Synergy, there is a Special Education link on the left side of the screen. Clicking on it will open an area with date links to the PDF of the IEP and the PDF of the most recent IEP progress report.



Education *Beyond* Expectations



Frequently Asked Questions

- Do students participate in the IEP meeting?

Typically starting at 5th grade, students attend their IEP meetings and participate in the discussion.

- Do students like their IEP meeting?

Some do, but others do not. For some, it is too much emphasis on them by too many people. We consider IEP meetings to be high stakes meetings because of this



Education *Beyond* Expectations



Questions?



Education *Beyond* Expectations



Contact

Kristin Asquith

Gifted Education Administrator
kasquith@bluevalleyk12.org

Education *Beyond* Expectations

